



Brookhaven
National Laboratory

BNL-105616-2014-TECH

BNL/SNS Technical Note No. 047;BNL-105616-2014-IR

BNL's EPICS's Development System

J. Smith

September 1998

Collider Accelerator Department
Brookhaven National Laboratory

U.S. Department of Energy

USDOE Office of Science (SC)

Notice: This technical note has been authored by employees of Brookhaven Science Associates, LLC under Contract No.DE-AC02-98CH10886 with the U.S. Department of Energy. The publisher by accepting the technical note for publication acknowledges that the United States Government retains a non-exclusive, paid-up, irrevocable, world-wide license to publish or reproduce the published form of this technical note, or allow others to do so, for United States Government purposes.

DISCLAIMER

This report was prepared as an account of work sponsored by an agency of the United States Government. Neither the United States Government nor any agency thereof, nor any of their employees, nor any of their contractors, subcontractors, or their employees, makes any warranty, express or implied, or assumes any legal liability or responsibility for the accuracy, completeness, or any third party's use or the results of such use of any information, apparatus, product, or process disclosed, or represents that its use would not infringe privately owned rights. Reference herein to any specific commercial product, process, or service by trade name, trademark, manufacturer, or otherwise, does not necessarily constitute or imply its endorsement, recommendation, or favoring by the United States Government or any agency thereof or its contractors or subcontractors. The views and opinions of authors expressed herein do not necessarily state or reflect those of the United States Government or any agency thereof.



BNL EPICS DEVELOPMENT SYSTEM

BNL/SNS TECHNICAL NOTE

NO. 047

John Smith
Sergey Kuznetsov
Jin Yu

September 15, 1998

ALTERNATING GRADIENT SYNCHROTRON DEPARTMENT
BROOKHAVEN NATIONAL LABORATORY
UPTON, NEW YORK 11973

Table Of Contents

1.	Introduction
2.	EPICS Fundamentals
3.	Hardware Configuration
3.1	Console Computers
3.2	Networking
3.3	IOC configuration
3.4	VME Modules
3.4.1	GPLS Board
3.4.2	VME ADC Board
3.4.3	NSLS DAC Board
4	Software Configuration
4.1	System Software
4.2	EPICS Related Software
4.3	Development Software
4.3.1	Tornado Cross Development
4.3.2	Microsoft Visual C++
4.3.3	Olectra Chart Library
4.3.4	Capfast
4.4	System Administration
5	Application Prototypes
5.1	IOC Level
5.2	Console Computer Level
6	Plans
6.1	Control System
6.2	Magnet Power Supplies
6.3	RF System
6.4	Vacuum system
6.5	Beam Diagnostics
6.6	Timing System
6.7	Magnet Measurement
6.8	Networking
6.9	PLCs
6.10	Fieldbus
6.11	CPU Boards
6.12	Database
6.13	NT Workstations
7	List Of Hardware & Software
7.1	Hardware
7.2	Software
8	References
9	WWW Links
Appendix I	
IOC Boot Configuration	
Appendix II	
Sample Program Displays	

1. Introduction.

The proposed Spallation Neutron Source (SNS) is an accelerator-based 1-2MW pulsed neutron source to be built in Oak Ridge, Tennessee. The facility has five major sections a "front end" consisting of a 65 Kev H⁺ ion source followed by a 2.5 MeV RFQ; a 1 GeV linac; a storage ring; a 1 MW spallation neutron target; and the conventional facilities to support these machines. These components will be designed and implemented by five collaborating institutions: Lawrence Berkeley National Laboratory (front end); Los Alamos National Laboratory (linac); Brookhaven National Laboratory (storage ring); Oak Ridge National Laboratory (neutron source and conventional facilities); and Argonne National Laboratory (instruments). The goal is to provide a fully integrated control system for all aspects of this complex.[1] The integration will be based upon the widely-used Experimental Physics and Industrial Control System (EPICS) control system toolkit.[2]

Since BNL has little experience with EPICS a project has been underway this year to develop an EPICS capability by installing development and prototype systems. This report presents the progress, current status and configuration of the EPICS development at Brookhaven National Laboratory. It also describes some of the plans for next year that includes the evaluation of EPICS hardware and software and the installation of test and development systems. Much of this work will be done in cooperation with the other collaborating institutions.

The control system evaluation project used the existing infrastructure of the National Synchrotron Light Source (NSLS) control system.

2. EPICS fundamentals

EPICS has been used at a number of sites for performing data acquisition, supervisory control, closed-loop control, sequential control, and operational optimization. The EPICS architecture[3] was originally developed by a group at Los Alamos and enhanced by the controls group at APS. It provides distributed processing and communication from a local area network (LAN) device to front end controllers. There are distributed workstations for operator interfaces, archiving, alarm management, sequencing, data analysis and other functions. There is a local area network for communications between processors and a set of single board computers for supporting I/O interfaces. The software design incorporates a collection of extensible tools interconnected through the channel access communication protocol. The software architecture allows users to implement control and data acquisition in a single board computer called the Input/Output Controller (IOC). All data is passed through the channel access protocol using gets, puts, or monitors (notification on change). One can extend the basic EPICS system in the IOC by creating new database record types, calling 'C' subroutines from the database, extending the driver support, and creating independent VxWorks tasks. The IOC provides the physical interface to a portion of a machine. Communication performance is a function of the channel access protocol, TCP/IP packet overhead, and the physical communication media.

EPICS is in use at a number of scientific laboratories, universities and commercial installations. The EPICS toolkit provides an environment for implementing systems that range from small test stands requiring several hundred points per second to large distributed systems

with tens of thousands of physical connections. The EPICS environment supports system extensions at all levels, enabling the users to integrate other systems or extend the system for their needs. Through the modular software design it is able to provide an upgrade path to the future.

EPICS is a toolkit for the development of a control system. The toolkit is used to build a control system specific to the users requirements. The development systems at BNL are providing experience with the use of these tools.

3. Hardware configuration

The control system hardware configuration is presented in Figure 1. The detailed description of each part is enclosed.

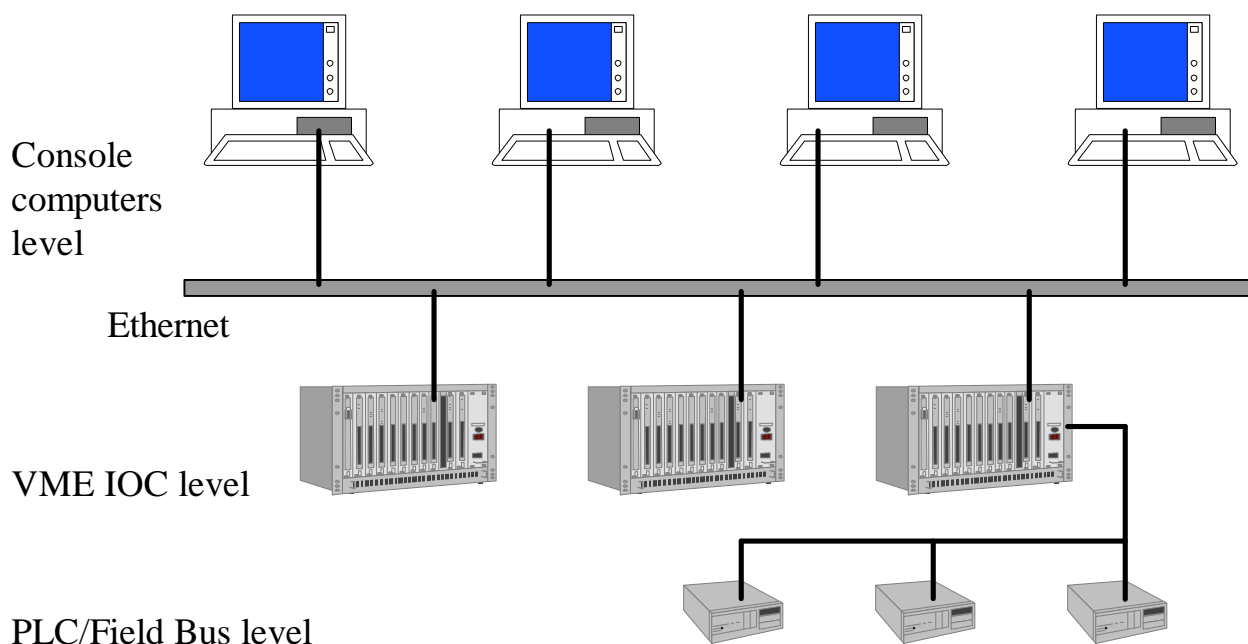


Figure 1. Control system structure

3.1. Console computers.

During the initial system evaluation the Hewlett Packard 735 workstation were used as a console and as a development server. That was predefined, because the existing NSLS control system is based on HP series computers. Because Vxworks was previously installed a rapid startup was possible. The initial goal was to gain sufficient experience so that there was confidence in the cost and time estimates done for the proposals. The present goal is to gain detailed design experience and to train Engineers, Physicists and Programmers that will work on the SNS project.

The present configuration includes Hewlett Packard 735 workstation, Sun Ultra 5 workstation, two Intel-based PCs and one X-terminal. The main characteristics of each console level computer presented in Table 1.

Table 1. Console computers

	CPU	Disk	DRAM	I/O	Operating System	Network name
HP735/125	HPPA 125 MHz	1 GB	32 MB	10 Ethernet	HPUX 10.0	ls7354
Sun Ultra5	Sparc 270 MHz	4 GB	128 MB	10/100 Ethernet CD	Solaris 2.5.6	lssun1
CompaqPC	Pentium 300 MHz	2 GB	64 MB	10/100 Ethernet CD	Windows NT 4.0	lssns1
CompaqPC	Pentium 300 MHz	2 GB	64 MB	10/100 Ethernet CD	Windows NT 4.0	lssns2

3.2. Networking

Ten Mbit Ethernet was used to integrate all consoles and IOCs into the network. The control system prototype used the existing network and printers resources available on the NSLS control system. While the computer hardware has 100Mbit capability some network components only support 10Mbit operation.

3.3. IOC configuration

The IOC part of the control system utilizes the VME standard. As was mentioned above each IOC in most cases is based on a single-board computer working under a real-time operating system. The SNS control prototype includes 3 VME crates. The single-board computers from Motorola are the most popular solution for this type of equipment. For the initial system evaluation the MVME162 boards were used. This board is based on the Motorola 68040 CPU and it is a ‘de-facto’ standard in the EPICS community. It however is nearing the end of its lifetime. The PowerPC based single-board computer is now available from Motorola with a performance ten times greater than the MVME162 board at about the same price. It also comes with The MVME2301 board was also evaluated. Three IOCs are now working and the characteristics are presented in Table 2. All IOCs have an internal 10 Mbit Ethernet interface connected to the local network. An ASCII terminal was used to configure boot parameters for each one. All IOCs have a color monitor connected to a dedicated interface board. The main characteristics of this interface board is presented below in the I/O module description. 14” TVs are used as color monitors.

Table 2. IOC CPU configuration.

	CPU	DRAM	Mezzanines	Operating System	Network name
MVME162	MC68040 32 MHz	4 MB	4 IndusryPack	VxWorks 5.3.1.	sns0
MVME162	MC68040 32 MHz	4 MB	4 IndusryPack	VxWorks 5.3.1	sns3
MVME2301	MPC603 200MHz	16 MB	2 PMC	VxWorks 5.3.1	sns4
MVME2305	MPC604 300MHz	16MB	2PMC	VxWorks 5.3.1	sns6

All of the described boards have connectors for mezzanine modules.

3.4. VME modules

A few types of VME I/O modules are used in the control system prototype. One goal of is to determine the ease or difficulty of writing support software for hardware not supported in the EPICS collaboration. Digital I/O interfaces, video output interface and analog I/O interfaces were evaluated.

3.4.1. GPLS (General Purpose Light Source) board.

The GPLS board was originally designed for the NSLS control system. It includes a variety of general purpose digital inputs and outputs. An interrupter provides four independently controlled interrupts for timing and event synchronization. An LED-based front panel display provides an output using 16 LED's. Manual system reconfiguration or configuration changes can be implemented using 16 DIP switches. For digital input and output, I/O lines are provided on the P2 connector as 16 inputs and 16 outputs.

The GPLS board includes Video Character Generator. This part of the board creates four pages of text data for display using color TV NTSC monitor. Character size and color are programmable. In addition, the board can also accept an NTSC signal from external source and overlay the text data onto original input signal.

The GPLS board includes time code reader/generator also. Time of day information with 1 microsecond resolution is provided. The board can also monitor one of the interrupt input signal lines and latch the time of occurrence. The board provides clock signals on P2 connector of 1,4,8 KHz.

3.4.2. VME ADC board.

The specifications of Acromag AVME9330 ADC board:

- 16 differential or 32 single ended input channels;
- +/- 5, +/-10 V input ranges;
- Software programmable gains: x1, x2, x4, x8;
- 16 bits A/D resolution;
- Maximum throughput rate. 33 KHz;

This board is used as general purpose ADC.

3.4.3. NSLS DAC board

The specifications of DAC board:

- 8 channels;
- +/-10 V output range ;
- 16 bits D/A resolution.

The test configuration measures the output signals of the DAC board using the ADC. Additional transition boards were used to directly connect 8 outputs of the DAC board to 8 inputs of an ADC board.

4. Software configuration.

4.1. System software

The original EPICS design was based on using Unix systems for console/development and VxWorks as the real-time operating system. At the present time the WindowsNT based version of base part of EPICS is available, but there are no organizations using EPICS without Unix server.

The Wintel platform is growing up in the market, and one of the important goals at BNL is the evaluation of Wintel computers as console/development base. Analysis and communications with the EPICS community indicates that at the present time EPICS based control systems MUST use a Unix console/development base. Some EPICS sites use Linux on Intel platform, but WindRiver does not support Linux as a cross development platform. The Linux base could be used for console applications but must have additional Unix (Solaris or HPUX) server for VxWorks cross development.

Initially EPICS release R3.12.2 was installed under HPUX at BNL. The VxWorks cross development system Tornado1.0.1 under HPUX was used. At the same time the Channel Access client library was used under Windows NT 4.0 for developing console applications.

The second step in the evaluation was the installation of the new EPICS release R3.13 under Solaris on a Sun computer. Tornado and the board support package (BSP) for the PowerPC MVME2301 board was installed on the Sun computer. A few definitions were done in the VxWorks sources for this PowerPC board. Most were placed in the vxworks/target/config/all/configAll.h file and enables the remote shell and other options which are necessary for EPICS. The extended VME access definitions were done in vxworks/target/config/mv2303/config.h file to enable A32 access from MVME2301 board to GPLS board. The evaluation of the configuration is proceeding.

The MEDM and Probe console applications now are available under Windows NT 4.0. These applications demand Exceed.dll libraries. The installation of these console applications was successfully done on the Compaq computers.

4.2. EPICS related software

EPICS software was evaluated during the prototype design. The most important tools are:

Graphical Database Configuration Tool (GDCT);
EDitDisplay/DisplayManager (EDD/DM);
Motif based Edit Display Manager (MEDM);
Alarm Handler (ALH);
State Notation Language (SNL, Sequencer);
Self Describing Data Sets (SDDS);
Archiver (AR).

The GDCT allows one to create database configuration files. Users can includes database records, make graphical links to define data/process flow. The GDCT is a key application for the preparation of IOC software. GDCT is available only on Unix platforms. The alternative way to prepare database configuration files is CapFast graphical packet. It is commercial available product under Unix and Windows NT. CapFast must be purchased to do an extensive evaluation.

EDD/DM allows one to prepare screens for console applications. It based on X-Windows. There are available graphic objects, color rules, parameters/templates. It is available under Unix,

MEDM is another graphical tool to prepare console application screens. Most of EPICS community uses MEDM. It is available under Unix and recently under Windows NT. One must install Exceed libraries to use MEDM under Windows NT.

ALH allows one to display and log alarms. It is very useful tool based on dedicated alarm configuration files. Each file could contain alarm group description hierarchy and rules to generate/acknowledge alarms. It is available under Unix.

SNL is an additional tool for IOC database record manipulations.

SDDS is a powerful tool for data analysis. It is a shell commands package. These commands are used for simulation post-processing, graphics, data preparation, program interfacing and experimental data analysis. Usually a scrip file is needed to execute a series of SDDS commands for data analysis. SDDS accepts the similar request file as AR archive package, the data is saved as binary or ASCII file. SDDS can snapshot and monitor the device and record data. The results can be plotted by SDDS command. The SDDS package is now running on HP workstations.

AR is for saving real-time data. AR activities are specified with commands in "archive request files". We are starting to install and test the software.

These tools were installed and tested during the evaluation. Several console applications were designed using these tools. Some of the console screens are placed in Appendix B of this report. The software evaluation will continue. The works will go in details in next year.

For the next step of the evaluation we're planning to use Knob Manager(KM) tool and StripTool. The LabVIEW connection to EPICS and ActiveX implementation of Channel Access are in plans to evaluate under Windows NT. Some organizations use SDDS while some use other tools. A review and comparison of these tools(e.g. IDL) is necessary.

4.3. Development software.

4.3.1. Tornado cross development system.

The Tornado 1.0.1 for HP-UX/Solaris development package from WindRiver Systems was used to develop VxWorks based real-time applications. Tornado is a network-based product that provides a modular tool-kit for host development system and set of board support packages (BSP) for the target processors. There are two installation of Tornado, one for HP-UX host and MC68040 targets, and second for Solaris host and PowerPC targets. There are many options in the Tornado package to debug real-time applications and monitor the operating system. This cross development system is also available under Windows NT, but there are no EPICS sites using this configuration.

4.3.2. Microsoft Visual C++

The Visual C++ 5.0 software package was used to create WindowsNT console applications. It based on Integrated Development Environment (IDE) tools called «Developer Studio». The IDE combines compiler, source debugger and on-line help information. The most popular is usage Microsoft Foundation Classes (MFC) library and extensions. During SNS project evaluation few test applications were designed using this C++ library. The EPICS Channel Access and WinSock libraries were inserted into projects as binary .lib files. To support powerful graphical presentation the Oletra Chart library was used.

4.3.3. Oletra Chart library.

The OletraChart software package was used to create graphical high-level applications under WindowsNT. Oletra Chart is a WindowsNT realization of the popular Unix XRTGraph library. This package includes functions to create, manipulate and display graphics in an on-line or off-line mode. OletraChart adds new OLE control to windows that displays data graphically in a window and can interact with a user. The chart is made up of a logical hierarchy of objects, and each object has its own properties and methods that determine how the chart looks and functions.

Data to be graphed may come from any source and may be updated at any time. Any font available from Windows NT may be used for header, footer, legend, axis and text area annotation. Examples of using OletraChart library presented at Appendix B, figures 2,3.

4.3.4. CapFast

CapFast from 3-PHASE company is adopted by EPICS system for generating the database channels and channel links in the graphics display. This software package is used as a database builder as GDCT in the EPICS. It has more powerful graphics displays and hierarchy features compared to GDCT. The Capfast software package is being tested in HP-UX and WindowsNT. The EPICS channel symbol library is installed in the Capfast package. The file created by Capfast is schematic file. A series of programs are used to convert the schematic file to EPICS supported database file. The hardware feature of EPICS records is added to the database file during the conversion. The graphical schematic file created by Capfast is displayed in Figure 8 at Appendix B.

Presently we only have a demo version of CapFast available for testing.

4.4. System administration

CVS("Concurrent Version System") is a system for managing source code under concurrent development by one or more individual programmer. CVS is built on top of the RCS("Revision Control System"), for normal use you don't have to know anything about RCS in order to use CVS. CVS requires RCS version 5.5 or higher. EPICS uses CVS to maintain program sources. The version R3.12.2 of EPICS works with CVS Release 1.5; the version R3.13.0.beta4 and upper works with CVS Release 1.7.

CVS maintains the version branch tree of the software package. Different version of the program can be check out. Once the updating of the program is done, you need to commit the program to CVS. CVS allows multi-user working on the same program independetly, CVS updates the newest version according to the commit results from all users. Now CVS is used to maintain the developing program of EPICS in HP-UX.

5. Applications' prototypes.

5.1. IOC device drivers

The device and driver support is one of the important parts in real-time applications. During the EPICS control system evaluation a few device/driver support routines were created. The GPLS board has front-panel switches and front-panel LED display. The board also has a video text generator which as implemented as String Output EPICS record. The new device/driver support was designed to support this board.

devBiGplsFIN.c - device support for Binary Input EPICS record, it manipulates with 1 bit of input data;
devMbBiDirectGplsFIN.c - device support for MultiBit Binary Input Direct EPICS record, it retrieves a sixteen bit hardware value and converts it to an array of sixteen unsigned characters, each representing a bit of the word;
devMbBoDirectGplsLED.c - device support for MultiBit Binary Output Direct EPICS record, it accumulates bits (in the fields B0-BF) as unsigned characters, and converts them to a word which is then written out to hardware;
devSoGplsV.c - device support for String Ouput EPICS record, it is used to output an arbitrary ASCII string;
drvGplsFIN.c - driver support for front-panel switches of GPLS board;
drvGplsLED.c - driver support for front-panel LED display of GPLS board;
drvGplsV.c - driver support for video text generator of GPLS board.

The new device/driver routines were designed to support Acromag 9330 ADC board and NSLS DAC board.

DevAiAvme9330Se.c - device support for Analog Input EPICS record, it obtains an analog value and converts it to engineering units, it is for single-ended version of ADC;
devAiAvme9330Di.c - same as above, but for differential version of ADC;

devAoLSDAC.c	- device support for Analog Output EPICS record, it sends values to DACs;
drvAvme9330.c	- driver support for Acromag 9330 ADC board;
drvLSDAC.c	- driver support for NSLS 8 channels DAC board.

These device/driver routines gives BNL some experience with the writing of EPICS drivers. The digital I/O and analog I/O were installed and tested successfully. The high-level console applications were also created to test this equipment. Several examples of screens are presented in Appendix B of this report.

The state notation language was also evaluated. The test application was created to generate a sine-wave output signal from the NSLS DAC board. This application can be started in the IOC. The application checks the binary input from the front-panel switch of GPLS board and starts or stops the sine-wave DAC generator. All sine-wave screen examples in Appendix B were generated by this real-time sequencer program.

5.2. Console computer applications

Two approaches were evaluated in the creation of control system prototype console applications.

The EPICS based approach assumes the use MEDM or EDD/DM tools for rapid development of console application screens. In this case, the developer uses MEDM and just types the database value names during the graphical screen creation phase. All information about screens and connections to IOCs is placed in .adl description files. This approach is popular in EPICS community and allows one to create powerful console applications with minimum efforts. A few console MEDM-based applications were designed. The MEDM allows using templates to generate applications which use input parameter as IOC name or database record name. This possibility also has been evaluated. Some of the screens are presented in figures 1,6 and 7 of Appendix B of this report. MEDM now is available under Windows NT. The example of ADC/DAC screen under WindowsNT is presented at figure 5 at Appendix B. This application was originally design under Unix and one can use the same adl. description files to run it under Windows NT. Some of other EPICS tools also were evaluated. The most important and popular is Alarm Handler (ALH) console application. This application uses input configuration text file, which describes hierarchy of devices, groups and assigned alarms states to each group, device or both. The example of using ALH is presented at figure 4 at appendix B. Unfortunately, this tool is not available under Windows NT.

The list of .adl files:

adcdacp.adl	- ADC/DAC control monitoring test application;
addach.adl	- screen for each channel in ADC/DAC monitoring;
dact1.adl	- DAC test application;
LEDTestp.adl	- LED display and control test, also monitoring the binary input;
videop.adl	- allows to put any ASCII string to color monitor via string output intrface.

Another way to create console applications is to write code using the tools and libraries to access and display data. The goal of this evaluation was getting experience to create dedicated applications. The Epidem application was designed under Windows NT using Microsoft Visual C++ 5.0, MFC general purpose library, OletraChart graphical library and ChannelAccess library.

The examples of screens are presented at figures 2,3 at Appendix B. The Epidem application has split window, which display on-line history of behavior for several devices. The additional dialog box can be used to adjust control values in the selected device. Using Visual C++ and powerful graphical libraries one can create their own applications which could be connected to IOCs.

Issns1:C:\epics\epidem - project directory of Epidem Windows NT application.

All console applications have connections to real-time equipment placed in IOCs. The set of I/O boards includes few GPLS digital I/O boards, Acromag 9330 ADC board and NSLS DAC board.

The input parameters availability allows us to use the same screens for different IOCs

6. Plans

Plans for the coming year are discussed in this part of the report. There is more work to do in many of the tasks described above and the work will continue. Other work planned includes the installation of systems for specific purposes such as staff training, hardware or software evaluation or to gain experience with some portions of the control system.

6.1. Control system

The hardware mezzanine concept is very popular now and is extensively applied in CERN, ANL and other accelerator laboratories all over the world. The main idea of this concept is using the mother boards as carriers which provides generic functionality for application-specific daughter boards. More than 300 modules made under this technology are available on market today. Among them there are intelligent and non-intelligent carries, ADC and DAC, digital I/O, serial and networking interfaces, motor controllers and DSP, telecommunications and bus interfaces. 90% of them are driver supported in real-time operation systems.

One step in the control system evaluation is to use several types of IndustryPack (IP) modules. The GPIB and multichannel serial interface IP modules are already used in the EPICS community.

The CompactPCI technology is becoming a standard for controls in some industries. The evaluation of CompactPCI crate and CPU is a possible next step. A single-board computer based on the PentiumII is now available from Motorola.(Model name is CPV5300). Unfortunately, there is little experience in the EPICS community with CompactPCI. The CompactPCI has some limitations such as the number of slots(8) and the availability of I/O boards. This may prevent it being used everywhere but it may be useful in some applications.

The VXI crate and I/O modules should be evaluated during next step of control development process. A VXI crate that can use standard VME CPU boards was demonstrated at ANL. Previously there were very few CPU boards,supported by VxWorks for the VXI bus.

6.2. Magnet power supplies

The power supplies control will be based on RHIC design. The RHIC control system uses a general purpose multiplexed analog to digital converter system and waveform generator board. The ADC system consists of a custom intelligent VME based controller module and 14-bit 64-channel multiplexed A/D converter module. The design features two independent scan groups, where one scan group is capable of acquiring 64 channels at 60 Hz, concurrently with the second scan group acquiring data at an aggregate rate of up to 80k samples/second. Data is stored in a circular static RAM buffer on the controller module. The waveform generator applies pre-programmed control functions in the different stages of accelerator facility cycles to drive power supplies. The output of waveform generator is the sum of one time-dependent function and two machine parameter-dependent functions. It will be necessary to develop device/driver support to interface with EPICS for these boards. The high-level applications will be necessary to evaluate the power supplies control.

6.3. RF system

A test system will be installed to give the RF group EPICS experience. This may be a shared system for the first year or until we find each group needs their own system.

6.4. Vacuum system

The vacuum equipment control and monitoring may be based on PLCs with Ethernet interface. The goal of the evaluation is to compare this interface with other standard interface and to connect the equipment to VME and develop EPICS device/driver support.

6.5. Beam diagnostic

Fast ADC multichannel modules are planned for the beam diagnostic systems. At the present time the 8 channel 12 bit VME module is designed for one RHIC beam diagnostic system. The module contains 128K words per each ADC channel. The maximum sampling frequency is 10 MHz. Common external triggering is available. An internal programmable clock generator allows testing the module. It will be necessary to develop device/driver EPICS support for this module and to evaluate the whole data acquisition system. The capability to collect large data arrays from the IOC is an important part of the evaluation.

It's planned to build a prototype device for beam measurement and to test the hardware in the AGS Linac. It's possible that higher performance boards (20-40MHz) will have to be tested.

6.6. Timing system

The RHIC timing system will be evaluated during the next step of SNS control system project. The RHIC timing control includes few VME modules. The V100 encoder module is used to transmit event codes to eventlink. This encoder module can be connected to event input module bus. The V101 event input module determines the relative priority of its 16 event trigger inputs. Sixteen V101 input modules can support 256 events. The V102 delay module contains 8 event output channels with programmable triggers, delay times, and delay clocks. The device/driver support development is necessary to evaluate these modules.

6.7. Magnet measurement

The magnet measurement system control will be necessary during initial phase of magnetic elements design and testing. During next step of SNS control system evaluation we're planning to evaluate and compare LabVIEW and EPICS approaches to magnet measurement system. One of possible solution is connection between LabVIEW and EPICS, which was already tested at LBL EPICS site.

6.8. Networking

The 100 Mbit Fast Ethernet is in the evaluation plan for the control system. Most of the new console computers as well as single-board computers have this option. The network itself must have the necessary components to allow 100MHZ transfers between nodes. During next year the local network will be upgraded so 100 Mhz testing can proceed.

Networking will be setup so the EPICS control system can be distributed over several sites at BNL where SNS personnel will be working. The network must allow secure communications, remote booting, access to a central server etc.

One of our goals is to measure the console update rates for screens with a varying number of parameters displayed.

6.9. PLCs

PLC's are proposed for use in the control of power supplies, RF and vacuum systems for the SNS. The power supply, RF and vacuum groups have experience with these devices and plan to use them in the subsystems design. In the computer control structure shown in Figure 1 the PLC is located at the lower level and communicates with the device level directly. The upper level VME system will control the PLC through the universal remote I/O link. Each PLC has local and remote control functionality.

Much of the BNL experience is with the Allen-Bradley hardware. PLC products from the Allen-Bradley company are divided into two series according to the PLC processor. PLC-5 is used to control large-sized systems. SLC-500 is a newer and cost-efficiency system, it is good for local control. It's likely both of them will be used in the future control system.

As first step, a PLC-5 processor, Analog I/O, VME scanner and software package are used to build the lower level of the control system. The VME scanner is used to link the VME bus with the PLC system.

Presently we have reviewed the specifications and literature with members of the AGS who work with this hardware. When PLC hardware and software is obtained, application software will be developed in the EPICS system.

6.10. Fieldbus

PLC's are one type of field bus. Other types commonly used are GPIB and Serial communications(RS232, RS422, RS485). There are proprietary field bus's used at various labs. As an example, AGS/RHIC has a proprietary bus for control of power supplies. At BESSY lab they use the CAN bus as a power supply controller. We will investigate and compare the various fieldbus options.

6.11. CPU Boards

While EPICS has been ported to the PowerPC boards extensive testing has not been completed. Testing the interrupt structure by simultaneously inserting several high data rate signals at different interrupt levels and testing for long periods (days) is still to be done. Running EPICS using clock rates much higher than normal will be tested. Some applications in the past have required processing input signals at several hundred HZ.

The best procedure for booting the CPU boards will be investigated. We have presently implemented the BOOP procedure. Other alternatives such as using flash memory will be investigated.

6.12. Database

One of the key points of the control system is database configuration. For the first part of the SNS control system evaluation a brief analysis of EPICS sites was done. It appears that the BESSY-II synchrotron radiation source and KEKB project have made the most progress in using a relational database system with EPICS. Both use ORACLE as the database.

The KEKB approach can automatically generate EPICS real-time database files, MEDM .adl files and VxWorks startup files.

BESSY-II has a more complex approach [4]. The database contains not only EPICS related information, but accelerator modeling data sets, full equipment descriptions and so on. The BESSY-II approach seems more useful. It is a general-purpose database for the whole SNS project, not only for control of storage ring, but for all systems and for all facilities. There are data input interfaces to AutoCAD, MS-Excel as well as to a text editor. Exported data can be imported by C/C++ or SQL programs, Web forms, MS-Excel via ODBC etc. BESSY-II also has implementation of interface to EPICS real-time database. The Web interface to the ORACLE database allows some simple interactions and monitoring.

We plan to evaluate the ORACLE data base management system during the next step of control system design phase. It seems a collaboration with BESSY which has made more progress in this area compared to any other EPICS site would be useful. BESSY recommends 'early set up of the database management system' as key to a successful implementation.

6.13. NT Workstations

The use of NT workstations as an operator console for the SNS is a possibility. We started to explore the feasibility of using NT by implementing a few applications as shown in the examples. We will continue the evaluation of NT software, hardware and tools by porting some applications to an NT system. We need more experience before a choice could be made between Unix and NT workstations.

7. List of hardware/software

The list of hardware and software products presented here includes product which are already in the evaluation phase and products which plan to be tested and evaluated.

7.1. Hardware

1. SUN workstation (Ultra 5)
2. HP workstation (HP735/125)
3. VME crate
4. Motorola MVME162 single-board computer
5. Motorola MVME 2301 single-board computer
6. Color TV/monitor
7. VME input/output modules
 - GreenSpring VIP610 IndustryPack passive carrier
 - VMIC 4116 8 channel 16 bit analog output board
 - VMIC 3122 64 channel 16 bit 100KHz analog input board
8. Allen-Bradley PLC module
 - PLC-5 processor
 - VME remote I/O scanner
 - Analog I/O
 - PLC software interface card
9. CompactPCI
 - Motorola CPX2108 8 slot chassy
 - Motorola CPV 5300 Pentium II based single-board computer
10. IndustryPack I/O mezzanine modules
 - GPIB interface GreenSpring IP-488
 - RS-232 interface GreenSpring IP-Octal 232
 - ADC 8 channel 16 bit GreenSpring IP-16ADC
 - DAC 3 channel 16 bit GreenSpring IP-16DAC
 - Digital I/O 24 bit GreenSpring IP-Unidig-E
11. Timing System Boards.

7.2. Software

1. VxWorks Tornado Development System (HP host+MC680x0 target)
2. VxWorks Tornado Development System (Sun host+PowerPC target)
3. Microsoft Visual C++ 5.0
4. Microsoft Office 7.0
5. Hummingbird XDK
6. OlectraChart 5.0 Library
7. ORACLE database
8. CapFast development utility
9. XRTGraph graphical library
10. RSLOGIC5 PLC development system
11. LabVIEW system

12. Presentation Software (IDL)
13. Scientific Software(Matlab, Mathematica)

8. References

1. Lewis S., et. al. "Distributed Implementation Plan for a Large, Distributed Accelerator Control System" in Proceedings of International Conference on Accelerator and Large Experimental Physics Control Systems,(ICALEPCS'97 Beijing, China 1997)
2. Kramer M., Dalesio J., et. al. "The Experimental Physics and Industrial Control System Architecture: past, present and future", in Proceedings of International Conference on Accelerator and Large Experimental Physics Control Systems,(ICALEPCS'93 Berlin, Germany 1993)
3. Dalesio, L. R., Krammer, M.R., Kozubal, A. J., "EPICS Architecture," in Proceedings of International Conference on Accelerator and Large Experimental Physics Control Systems, (ICALEPCS'91, KEK, Tsukuba, Japan, 1991),pp. 278-282.
4. R.Muller, et. al. "Significance of a Comprehensive Relational Database System for Modern Accelerator Controls" in Proceedings of International Conference on Accelerator and Large Experimental Physics Control Systems,(ICALEPCS'97 Beijing, China 1997)

9. WWW links

1. SNS project web-site <http://www.ornl.gov/~nsns/nsns.html>
2. EPICS main page
<http://www.aps.anl.gov/asd/controls/epics/EpicsDocumentation/WWWPages/>
3. EPICS web-site at LANL <http://www.atdiv.lanl.gov/aot8/epics/epicshm.htm>
4. EPICS web-site at Jefferson Lab. http://www.jlab.org/accel/documents/epics_doc.html
5. EPICS web-site at LBL <http://csg.lbl.gov/CSG.html>
6. Win River Systems <http://www.wrs.com/>
7. OlectraChart library <http://www.klgroup.com/>
8. Motorola Computer Group <http://www.mcg.mot.com>
9. BESSY-II Oracle database page <http://oracle.bessy.de/>
10. RHIC control system hardware page <http://www.rhichome.bnl.gov/Hardware/>

Appendix A

IOCs VxWorks boot configurations

1. sns0 (MVME162)

boot device:ei
host name:ls7501
file name:/users2/u3/epics/boot/iocs/sns0/vxworks
inet on ethernet:130.199.195.210
host inet:130.199.194.23
flags:0x8
target name:sns0
startup script:/users2/u3/epics/boot/iocs/sns0/startup.cmd

2. sns3 (MVME162)

boot device:ei
host name:ls7501
file name:/users2/u3/epics/boot/iocs/sns3/vxworks
inet on ethernet:130.199.195.213
host inet:130.199.194.23
flags:0x8
target name:sns3
startup script:/users2/u3/epics/boot/iocs/sns3/startup.cmd

3. sns4 (MVME2301)

boot device:dc
host name:lssun1
file name:/users/epics/master/vxworks/target/config/mv2303/vxworks
inet on ethernet:130.199.195.214
host inet:130.199.195.223
flags:0x2
target name:sns4
startup script:/users/epics/snseva/iocBoot/iocsns4/st.cmd

Appendix B

Console application screen examples

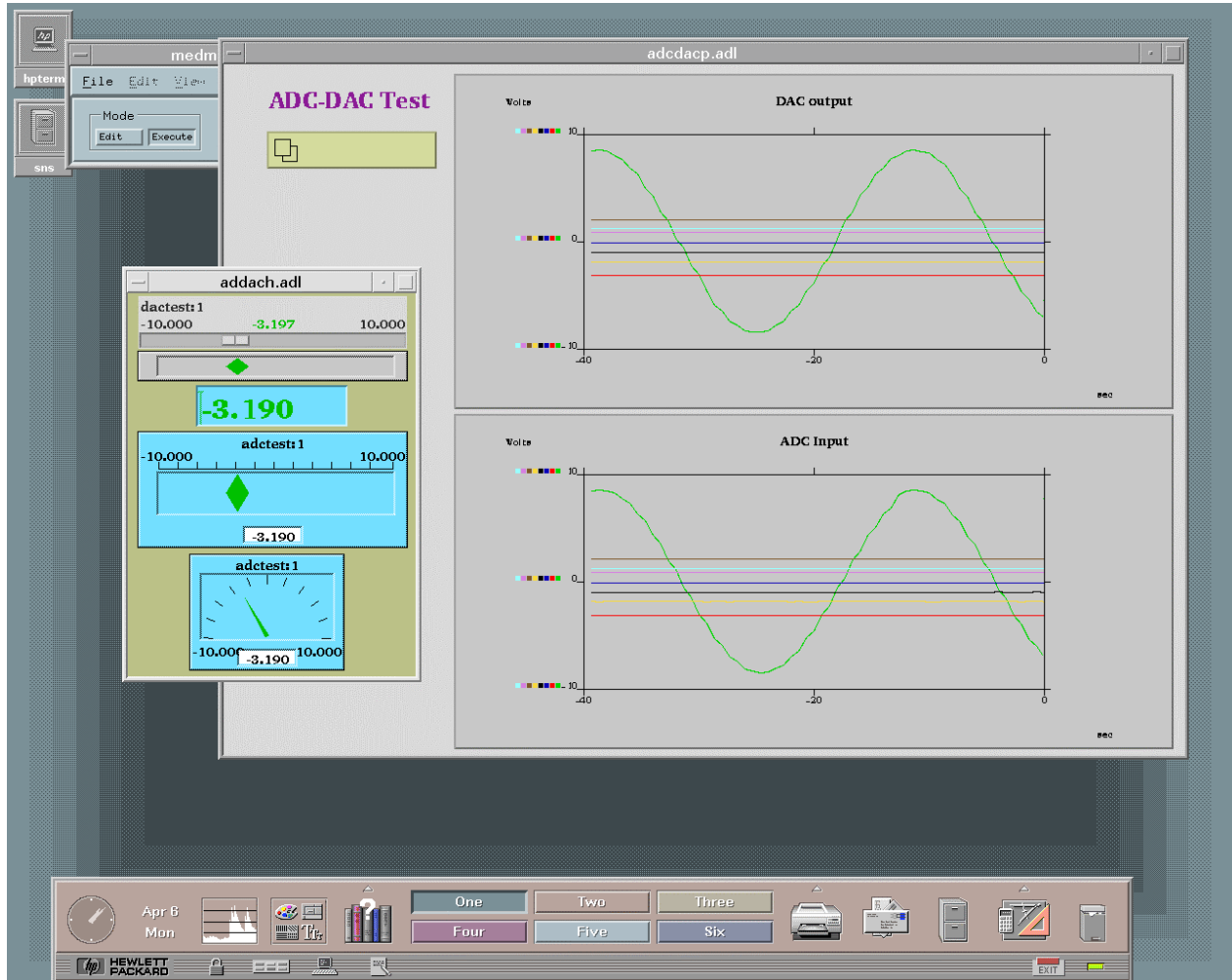


Figure 1. MEDM based demo application under HP-UX.

The application allows setting 8 DAC channels and monitoring 8 ADC channels. It uses the Acromag 9330 ADC board and NSLS DAC board. A sine wave is generated by a sequencer program running in the IOC and writing to the DAC board. Users can select any DAC channel and set it using slider.

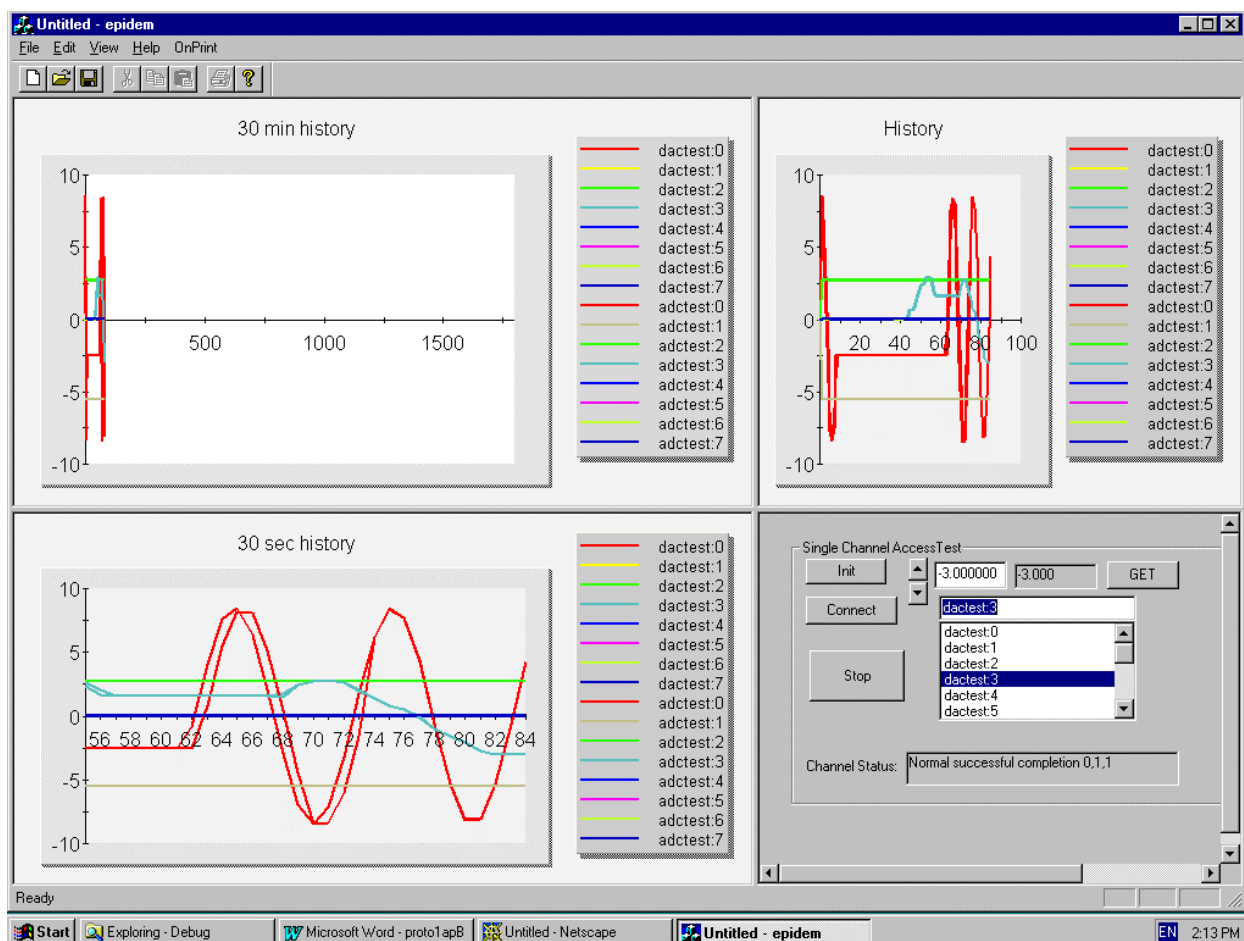


Figure 2. Console application example under Windows NT. (“epidem” application)

The application uses OlectraChart 5.0 graphical library and ChannelAccess client library. The application uses the same IOC (Fig 1) with Acromag ADC and NSLS DAC boards. The main window has 3 subwindows to display 30 sec history, 30 min history and whole history. The dialog subwindow allows setting any DAC channel. Users can resize any subwindow.

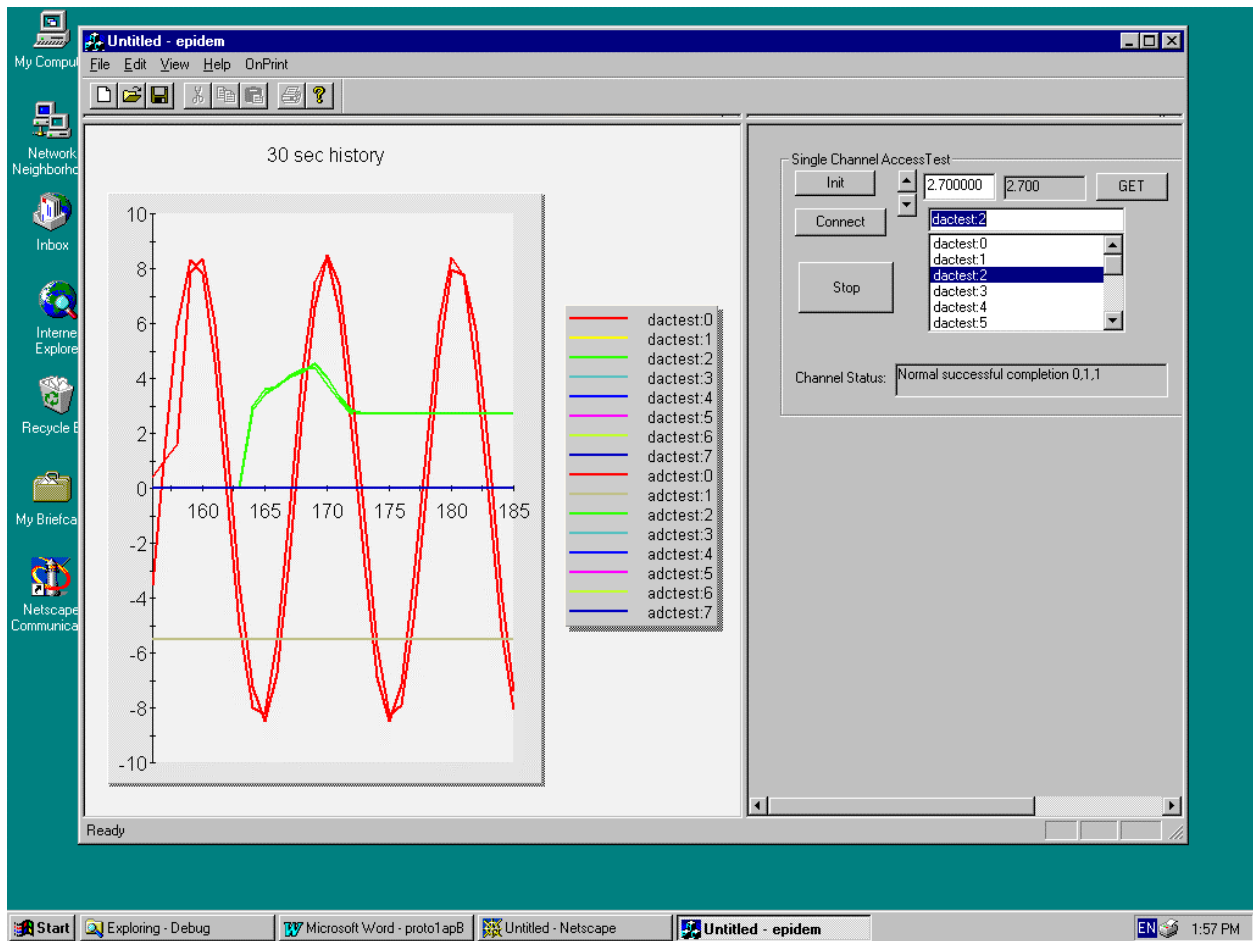


Figure 3. Another version of view for “epidem” application
The 30 sec history subwindow was resized to full window size.

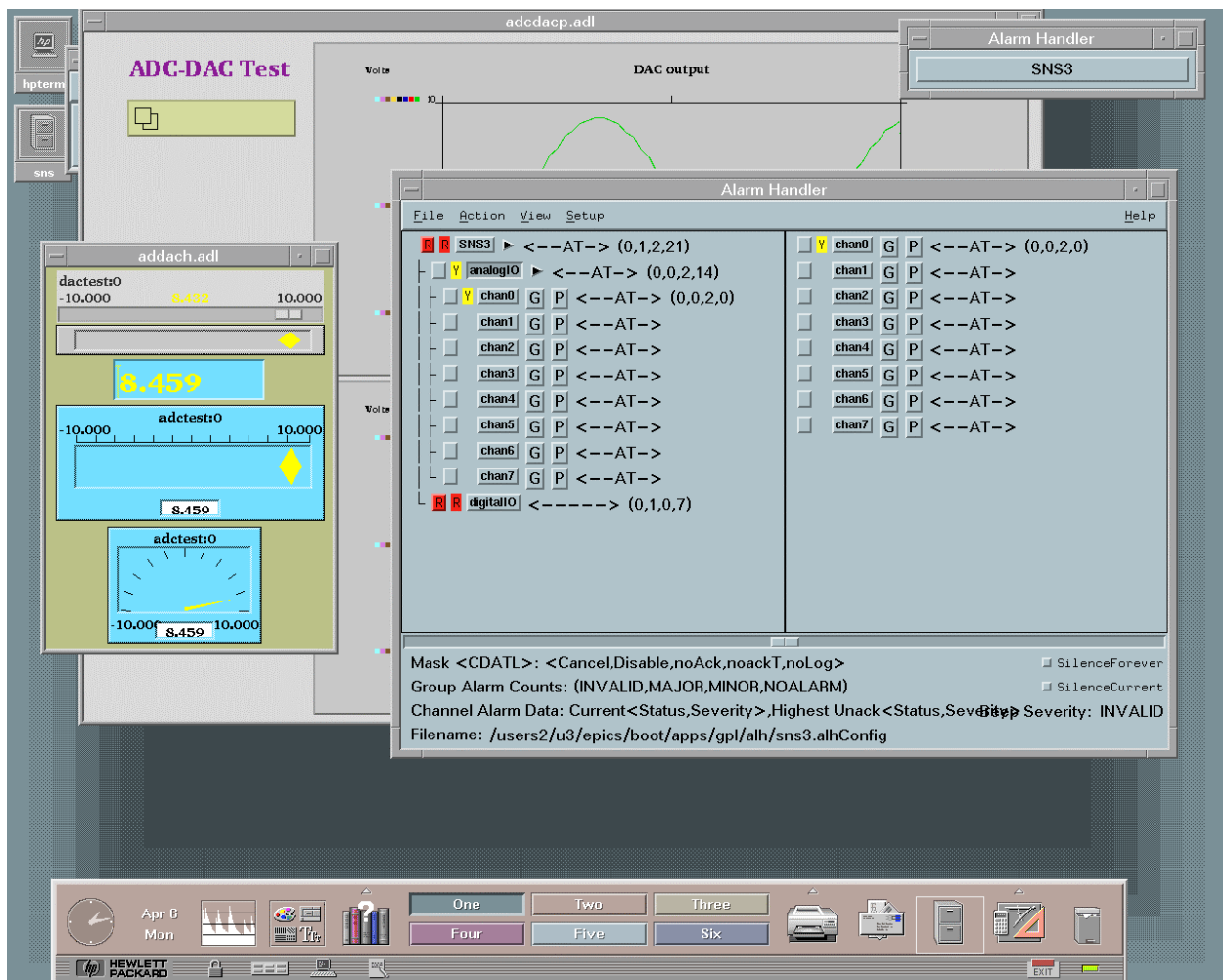


Figure 4. Alarm Handler demo application.

The Alarm Handler application has a window with a list of monitored channels. In case of an alarm the color of the rectangle placed near the channel name will be red or yellow. In this demonstration the MEDM based application was used to set a DAC output value to get an alarm.

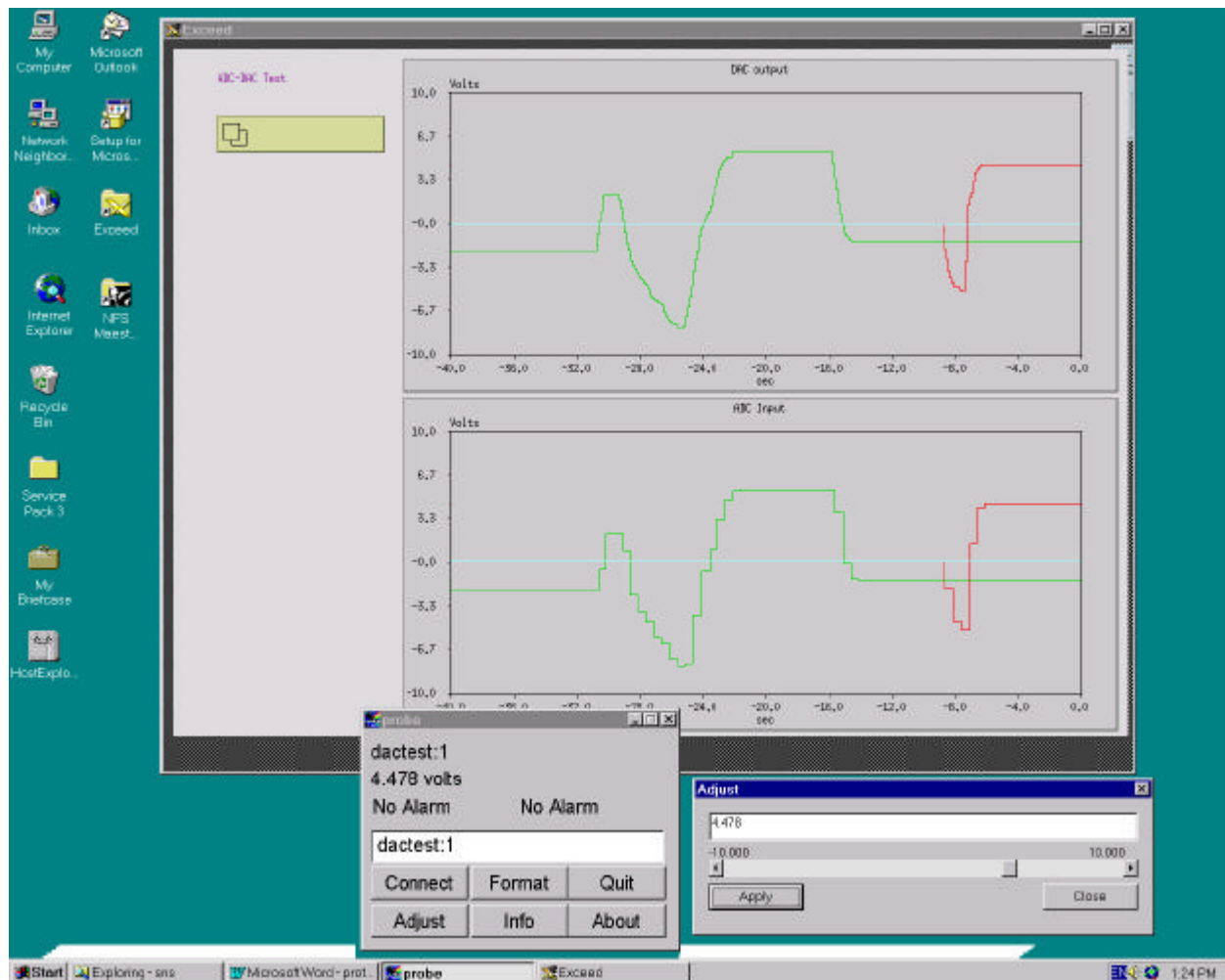


Figure 5. MEDM based application running under Windows NT. The MEDM based application connects to the IOC using ChannelAccess. The MEDM screen under WindowsNT is very similar to HPUX screen at figure 1. The Probe application screen placed at bottom part allows adjusting the DAC setpoint.

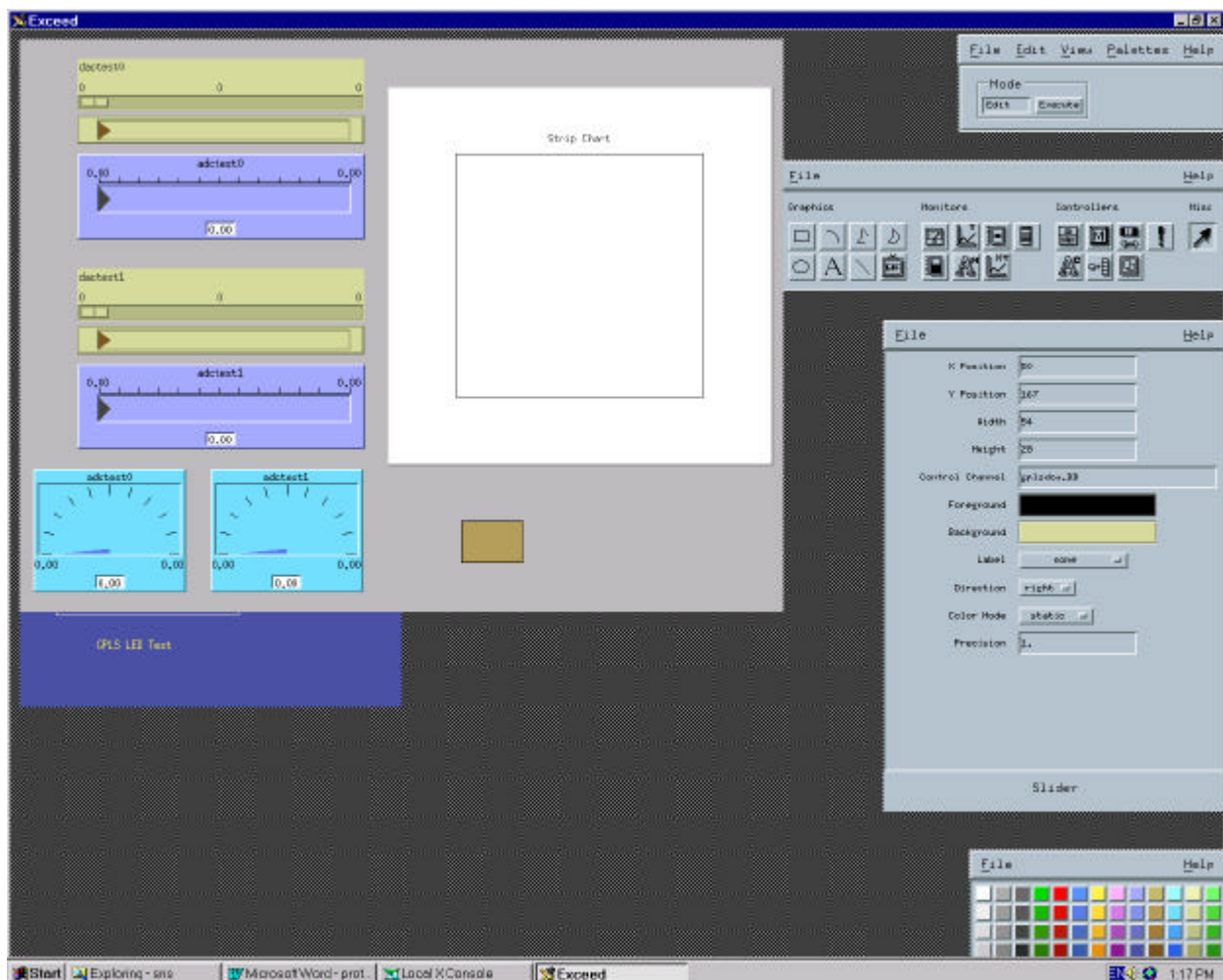


Figure 6. MEDM edit session example under Windows NT
It is a standard MEDM screen editable session.

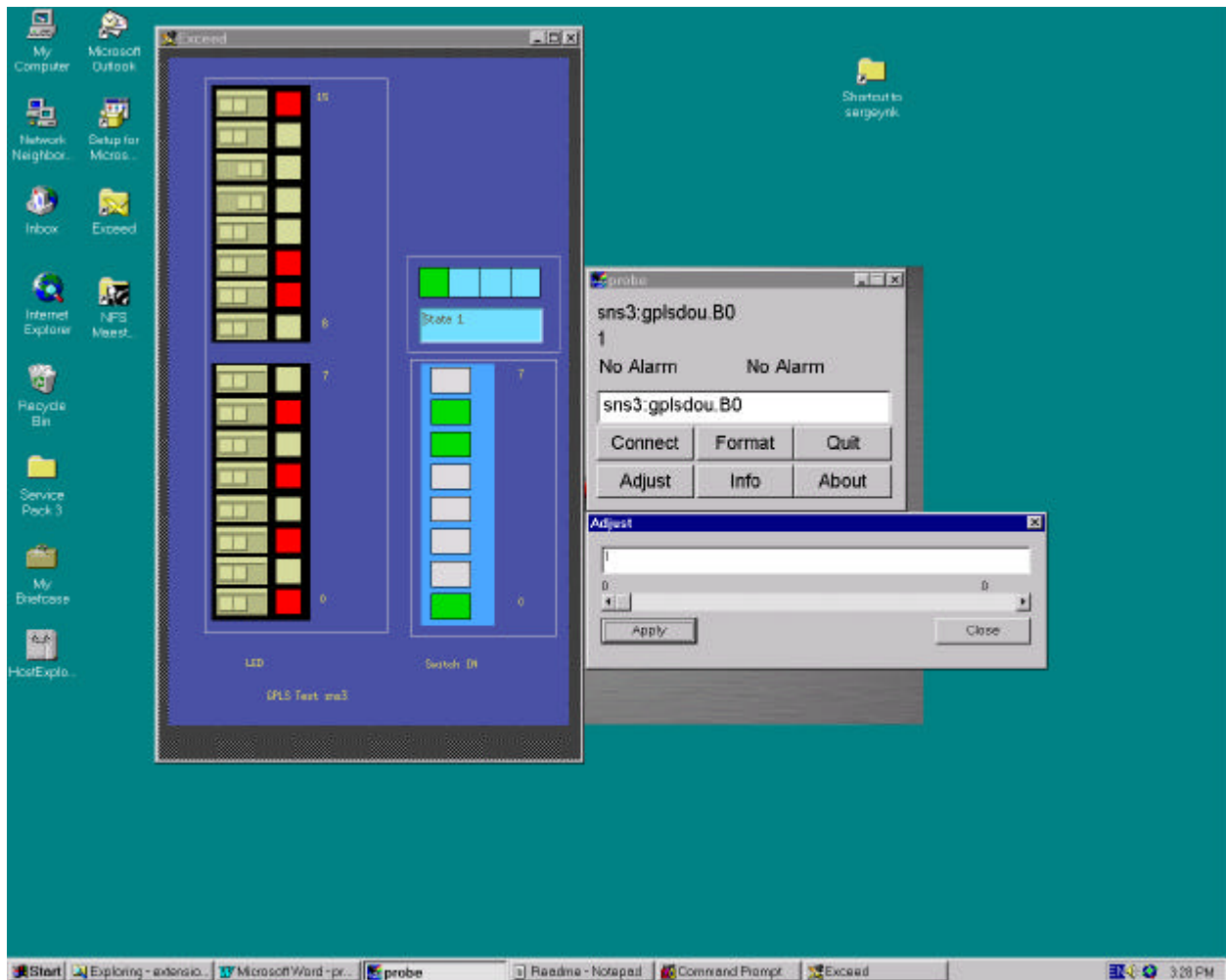


Figure 7. MEDM based screen to demonstrate GPLS board binary I/O. This application displays the status of LED display on the GPLS board and allows turning each LED on or off. The status of input switches of GPLS board also indicated.

Figure 8. CapFast graphical database configuration example.

