

Quadrupole Kicker for RHIC

O. Dressler

August 2001

Collider Accelerator Department
Brookhaven National Laboratory

U.S. Department of Energy

USDOE Office of Science (SC)

Notice: This technical note has been authored by employees of Brookhaven Science Associates, LLC under Contract No. DE-AC02-98CH10886 with the U.S. Department of Energy. The publisher by accepting the technical note for publication acknowledges that the United States Government retains a non-exclusive, paid-up, irrevocable, world-wide license to publish or reproduce the published form of this technical note, or allow others to do so, for United States Government purposes.

DISCLAIMER

This report was prepared as an account of work sponsored by an agency of the United States Government. Neither the United States Government nor any agency thereof, nor any of their employees, nor any of their contractors, subcontractors, or their employees, makes any warranty, express or implied, or assumes any legal liability or responsibility for the accuracy, completeness, or any third party's use or the results of such use of any information, apparatus, product, or process disclosed, or represents that its use would not infringe privately owned rights. Reference herein to any specific commercial product, process, or service by trade name, trademark, manufacturer, or otherwise, does not necessarily constitute or imply its endorsement, recommendation, or favoring by the United States Government or any agency thereof or its contractors or subcontractors. The views and opinions of authors expressed herein do not necessarily state or reflect those of the United States Government or any agency thereof.

C-A/AP/60
August 2001

Quadrupole Kicker for RHIC

O. Dressler



**Collider-Accelerator Department
Brookhaven National Laboratory
Upton, NY 11973**

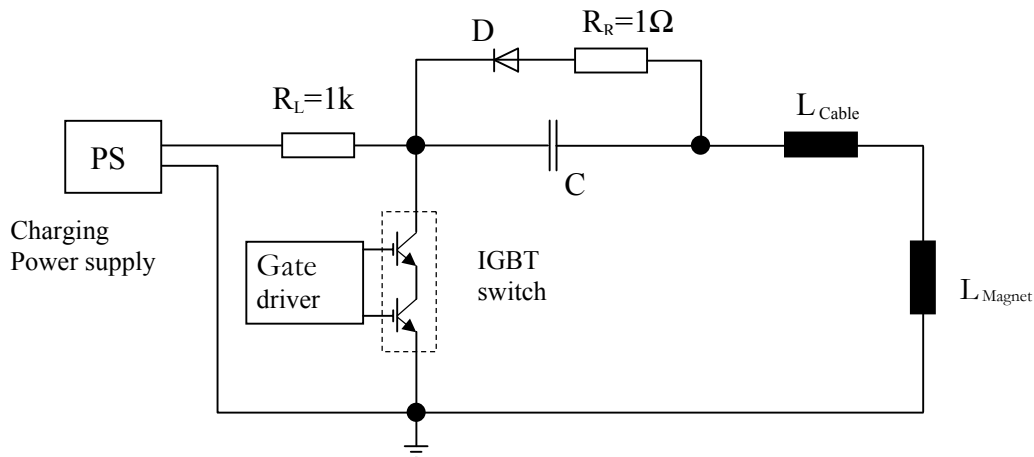
Quadrupole Kicker for RHIC

It is assumed that echo phenomena can be produced in RHIC with a quadrupole kicker excited a short time after an initial dipole kick. For that reason special air core quadrupole magnets were already installed in RHIC. The principal task was to design a pulse circuit what combines the electrical properties with the physical necessities.

In electrical terms of the kicker magnet is mainly described by applicable voltage and possession of inductivity. Both are limiting margins for the pulse circuit.

The inductivity of the magnet was measured with 105 μH . A feeding cable could have up to 20 μH . It was estimated that the applicable Voltage is 2000 V. The period of revolution in RHIC requires a pulse length shorter than 20 μs . It was claimed to produce the highest available current with the pulse circuit (more than 50A). Because of the for this case very high inductance of the magnet the use of a sine half wave pulse circuit seemed to be the best solution.

Circuit Diagram

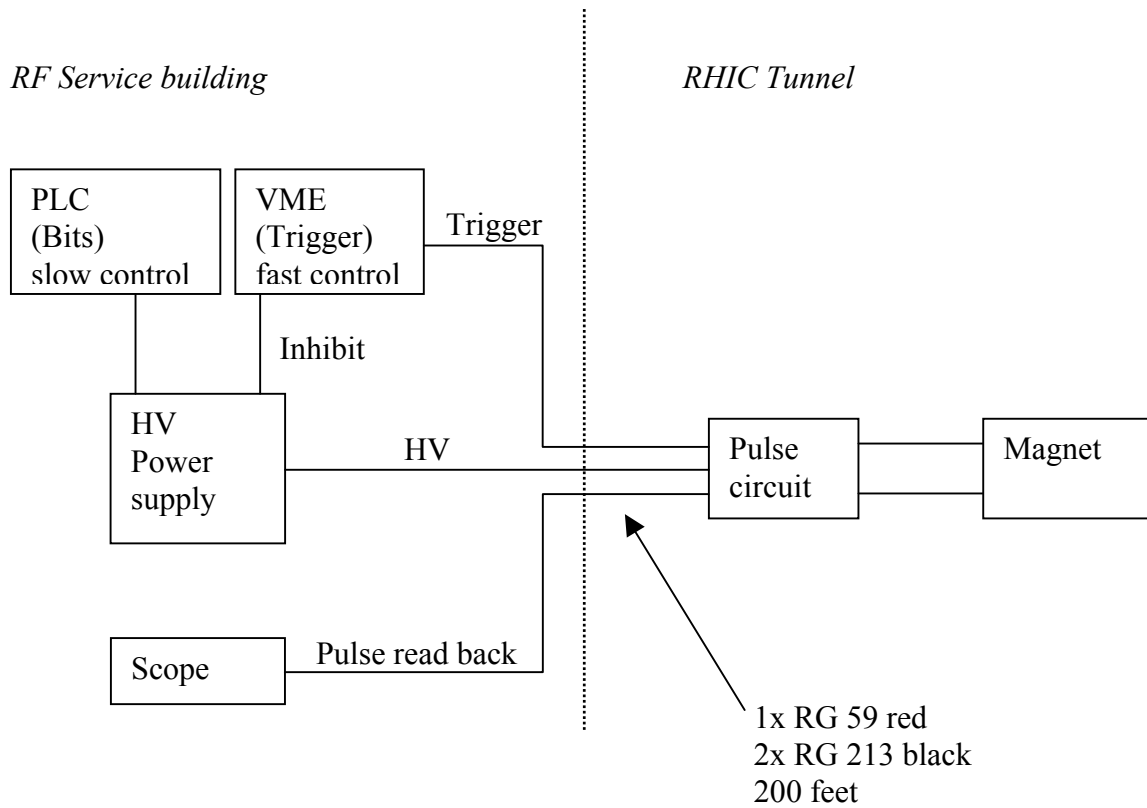


$$L = L_{Magnet} + L_{Cable} \quad L = 105\mu\text{H} + 20\mu\text{H} \quad \underline{\underline{L = 125\mu\text{H}}}$$

$$C = \frac{\tau^2}{\pi^2 * L} \quad C = \frac{(20 * 10^{-6} \text{ s})^2}{\pi^2 * 125 * 10^{-6} \text{ V/A}} \quad \underline{\underline{C = 324\text{nF}}}$$

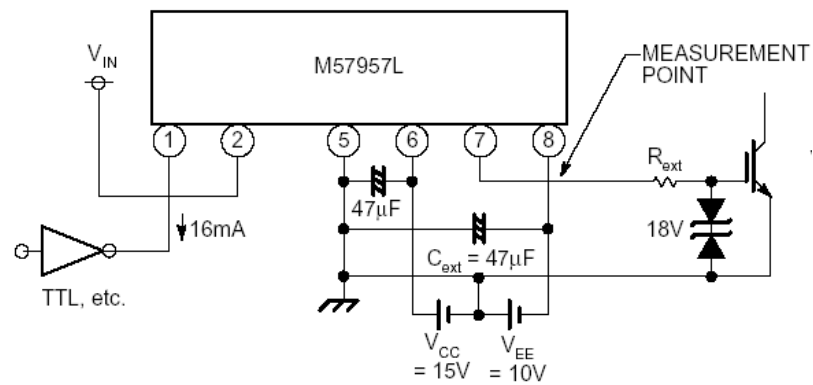
$$\hat{I} = \sqrt{\frac{C}{L}} * V \quad \hat{I} = \sqrt{\frac{0,324 * 10^{-6} \text{ A}^2}{125 * 10^{-6} \text{ V}^2}} * 2000\text{V} \quad \underline{\underline{\hat{I} = 101\text{A}}}$$

Block diagram



Gate driver circuit

2 times to drive Dual IGBT Module CM100DU-34KA from Powerex, Inc.



Pulse shape

During our test we learned how to increase the pulse shape for the finally installation. The frequency of the resonant circuit is defined by L and C. Since L is fix, only C can be changed change the frequency. The main part to influence the back swing performance is the reload circuit R. The choice of R_R has to be made by evaluating the necessity for zero-crossing related to beam revolution, smooth approximation of the pulse current to the zero line without noise and how much reverse voltage the switch can bear.

