

COMPUTER CONTROLLED POWER SUPPLIES

R. Frankel

May 1970

Collider Accelerator Department
Brookhaven National Laboratory

U.S. Department of Energy

USDOE Office of Science (SC)

Notice: This technical note has been authored by employees of Brookhaven Science Associates, LLC under Contract No.AT(30-1)-16 with the U.S. Department of Energy. The publisher by accepting the technical note for publication acknowledges that the United States Government retains a non-exclusive, paid-up, irrevocable, world-wide license to publish or reproduce the published form of this technical note, or allow others to do so, for United States Government purposes.

DISCLAIMER

This report was prepared as an account of work sponsored by an agency of the United States Government. Neither the United States Government nor any agency thereof, nor any of their employees, nor any of their contractors, subcontractors, or their employees, makes any warranty, express or implied, or assumes any legal liability or responsibility for the accuracy, completeness, or any third party's use or the results of such use of any information, apparatus, product, or process disclosed, or represents that its use would not infringe privately owned rights. Reference herein to any specific commercial product, process, or service by trade name, trademark, manufacturer, or otherwise, does not necessarily constitute or imply its endorsement, recommendation, or favoring by the United States Government or any agency thereof or its contractors or subcontractors. The views and opinions of authors expressed herein do not necessarily state or reflect those of the United States Government or any agency thereof.

Accelerator Department
BROOKHAVEN NATIONAL LABORATORY
Associated Universities, Inc.
Upton, New York

AGS DIVISION TECHNICAL NOTE

No. 78

R. Frankel
May 1, 1970

COMPUTER CONTROLLED POWER SUPPLIES

A simple method of using general purpose power supplies of the reference element-differential amplifier type as pulsed and/or programmed and/or computer controlled current regulated power supplies is presented.

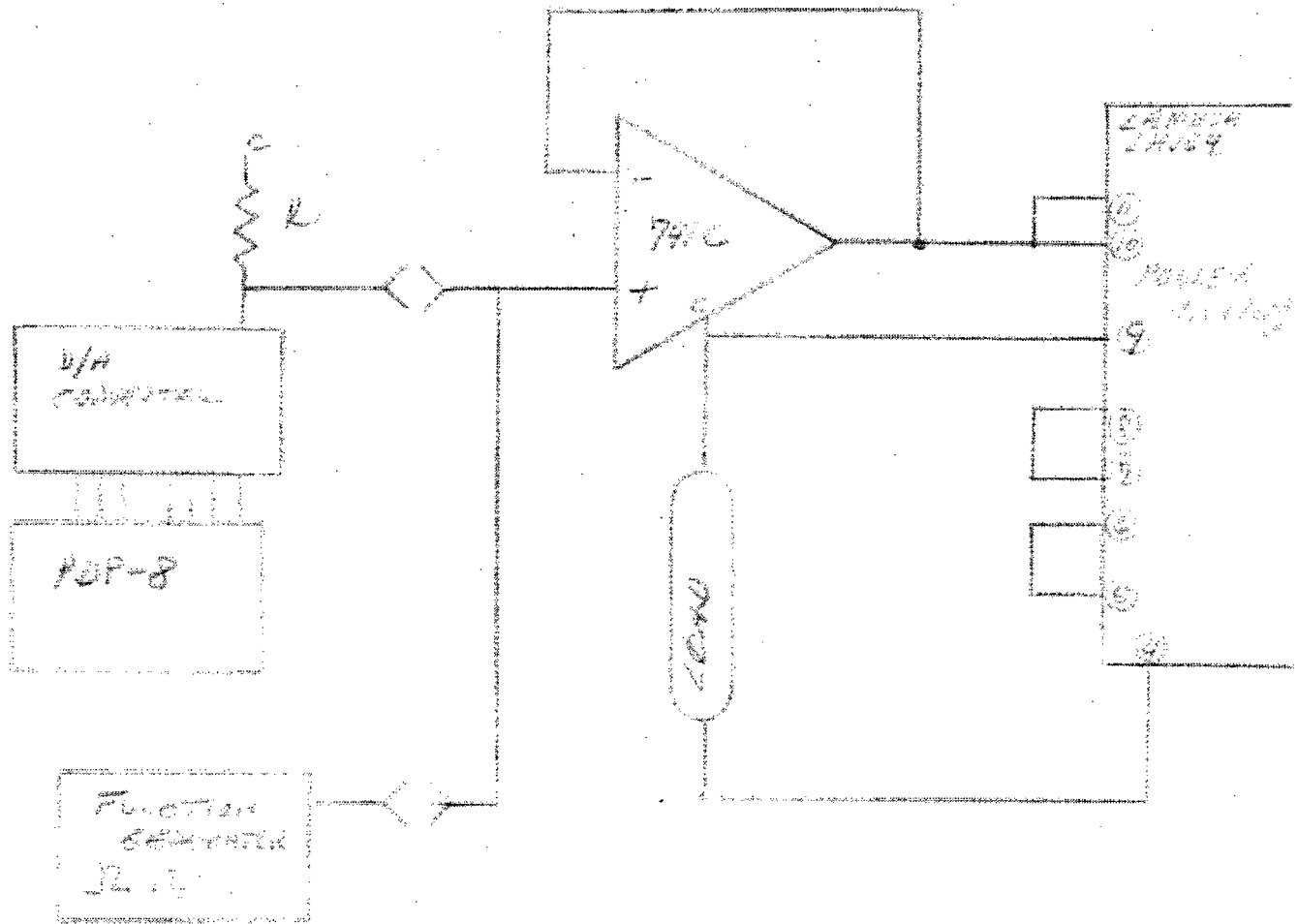
Available at the input terminals of most power supplies is provision for employing a variable resistance (typically 100 or 200 Ω) to produce a current regulated output of controlled magnitude. Actually this node is an entry into the differential amplifier control loop of the power supply, and the supply is set to sense the voltage developed across the external resistor by a supply generated current source. Thus if we replace the external resistor by a true voltage source (operational amplifier), resistance control becomes voltage control with all its inherent advantages.

Since we have not modified the power supply itself, the resulting system is as linear as under resistance control (quite good), and stability is dependent upon the previous specifications of the supply plus the drift of the operational amplifier which is small since a unity gain non-inverting configuration may be used.

Distr: Department Administration

G. Bagley
M. Barton
G. Bennett
J. Cottingham
J. Curtiss
A. Feltman
E. Gill

J. Herrera
R. Larson
R. Nawrocky
A. Otis
E. Raka
R. Sanders
A. Soukas
A. Tranis



TYPICAL CONNECTION
FOR CONSTANT CURRENT
SOURCE VOLTAGE CONTROL